

EVERTON

 **GENROSE**





4"x12" Wall Tile in Arctic | Saffron | Sunset | Ocean



4"x12" Wall Tile in Nightsky

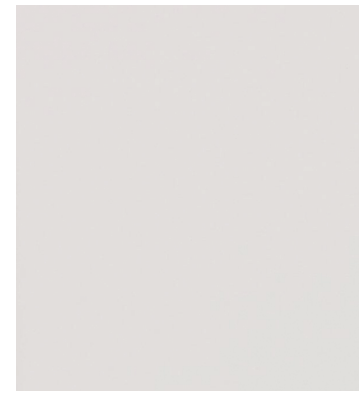
AVAILABLE IN:

8mm Wall Tiles				
SIZE	FINISH		STOCK COLORS	SPECIAL ORDER COLORS
4"x12"	Gloss		Arctic	Alloy Almond Coal Coffee Dolphin Fawn Ocean Poppy Saffron Sand Sunset Tarragon
4"x12"	Satin		Snow	Acorn Mink Nightsky Pewter Putty Seed Steel
8mm Trim Pieces				
SIZE	TYPE	FINISH	STOCK COLORS	SPECIAL ORDER COLORS
4.5"x12"	Cove Base	Gloss	Arctic	-
.75"x4.5"	Cove Corner	Gloss	Arctic	-
1"x12"	Flat Liner*	Gloss	Arctic	-
1"x12"	Torello Pencil*	Gloss	Arctic	-
		Satin	Snow	-
.5"x12"	Finishing Strip	Gloss	Arctic	-
		Satin	Snow	-
4"x12"	Bullnose 4" Side	Gloss	Arctic	-
		Satin	-	Snow
4"x12"	Bullnose 12" Side	Gloss	Arctic	-
		Satin	-	Snow

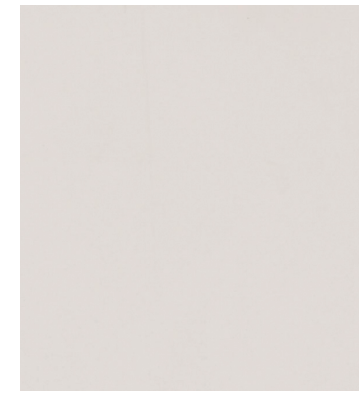
All Sizes are Nominal.
*Glazed on long side.



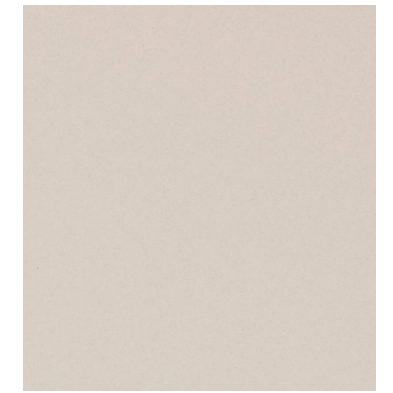
4"x12" Wall Tile in Snow



Arctic | Gloss



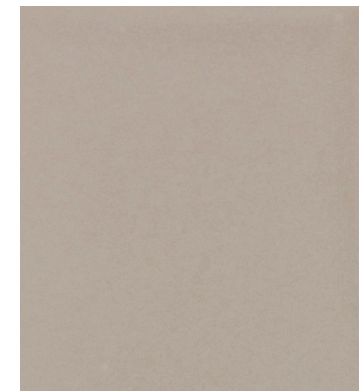
Snow | Satin



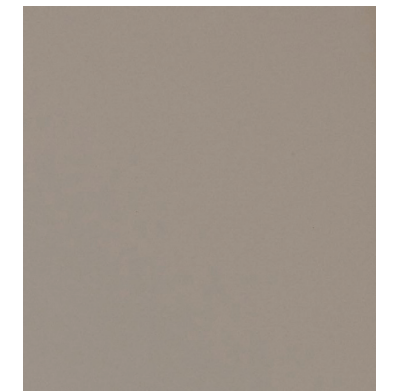
Sand | Gloss



Putty | Satin



Fawn | Gloss



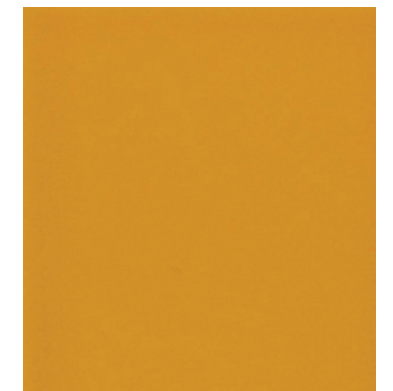
Seed | Satin



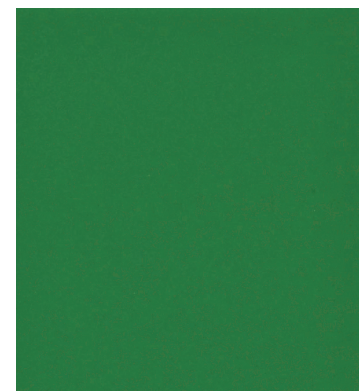
Poppy | Gloss



Sunset | Gloss



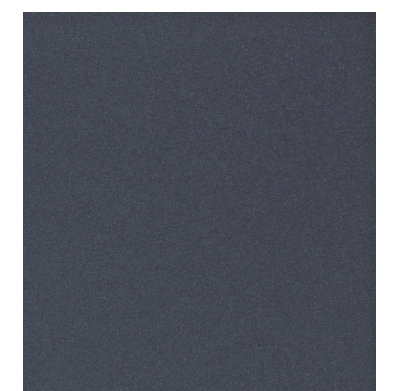
Saffron | Gloss



Tarragon | Gloss

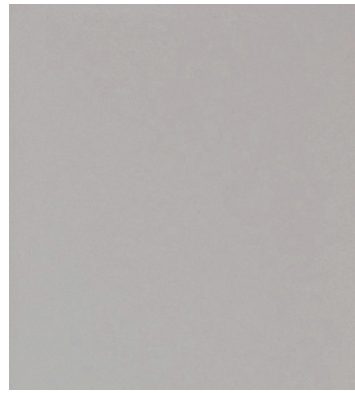
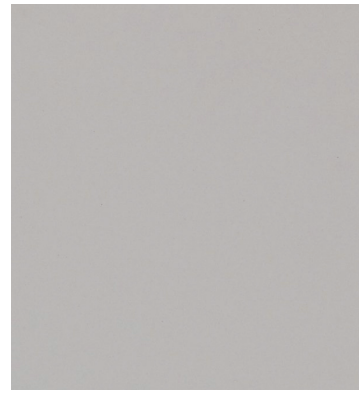
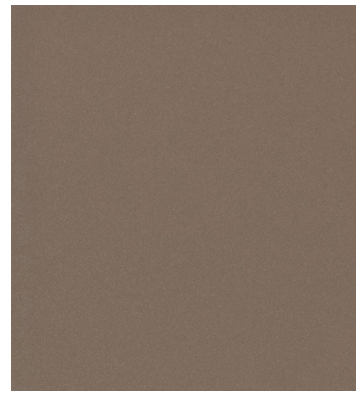
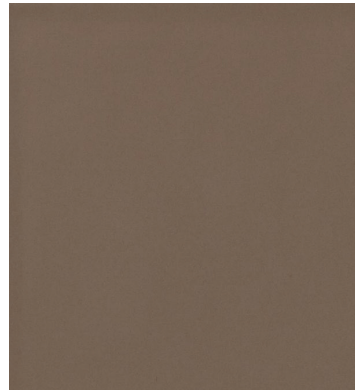


Ocean | Gloss

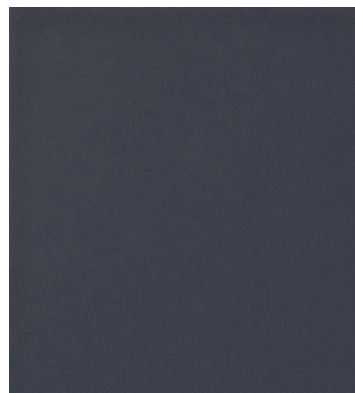
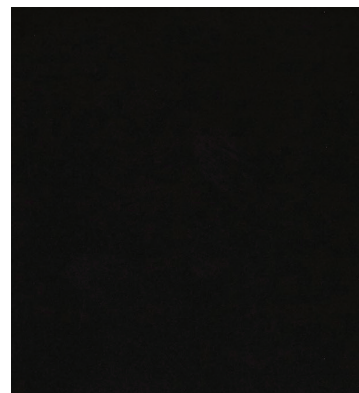
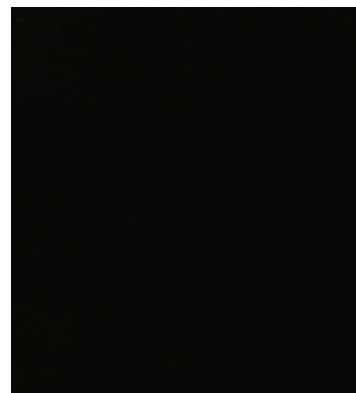


Dolphin | Gloss

Colors shown may vary from actual product. Final selection should be made from actual product samples. Products and availability are subject to change, please refer to our website for the most up to date selection.


Alloy | Gloss

Pewter | Satin

Coffee | Gloss

Mink | Satin

Acorn | Satin

Almond | Gloss

Steel | Satin

Nightsky | Satin

Coal | Gloss

Features	Test Method	Value
Length / Width	EN ISO 10545 - 2	≤ ± 0.25%
Thickness		± 2.5%
Straightness of Side		0.15%
Rectangularity		± 0.4%
Surface Flatness		± 0.3%
Water Absorption		EN ISO 10545 - 3
Weight / M ²	-	8mm Thick 13.74 kg
Modulus of Rupture	EN ISO 10545 - 4	≥ 25N / mm ²
Thermal Shock	EN ISO 10545 - 9	Pass
Frost Resistance	EN ISO 10545 - 12	Not Suitable
Chemical Resistance	EN ISO 10545 - 13	Class A - B
Stain Resistance	EN ISO 10545 - 14	Class 3
Fire Rating	-	Class A 1 Non Combustible
Recycled Material	-	Up to 20%
Low Emissions Material • Zero VOC		

According to ANSI and MIA standards, depending on the type and size of tile, it is recommended to have at least a 1/8" wide grout joint for floor tiles in order to be able to fill the grout joint full and never less than 1/16" wide. Please refer to TCNA guidelines for more on grout recommendations.


Product Info:

- Ceramic Tile
- Gloss | Satin Finishes
- 8mm Thickness
- V1 - Uniform Appearance
- Frost Resistance = No





www.genrose.com