

EVOKE

 GENROSE





8"x24" Field Tile in White  
8"x24" Stripes Sea Deco



8"x24" Field Tile in White | Beige  
8"x24" Flower Sun Deco

## AVAILABLE IN:

### 9.8mm Field Tiles + Decos

- 8" x 24" *Glossy Finish*
- 8" x 24" *Flower Sea Deco Glossy Finish*
- 8" x 24" *Flower Sun Deco Glossy Finish*
- 8" x 24" *Patch Sea Deco Glossy Finish*
- 8" x 24" *Patch Sun Deco Glossy Finish*
- 8" x 24" *Stripes Sea Deco Glossy Finish*
- 8" x 24" *Stripes Sun Deco Glossy Finish*

- All sizes are NOMINAL

### Mosaics

- 0.75" x 0.75" *Mosaic Glossy Finish*
- 12" x 12" *Sheet Fan Mix 1 Glossy Finish*
- 12" x 12" *Sheet Fan Mix 2 Glossy Finish*

### Trim Pieces

- 0.5" x 8" *Quarter Round Glossy Finish*



0.75" x 0.75" Mosaic in Red



**White**



**Beige**



**Aquamarine**



**Light Blue**



**Dark Blue**



**Teal**



**Yellow**

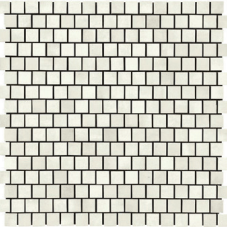


**Orange**

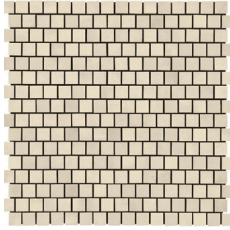


**Red**

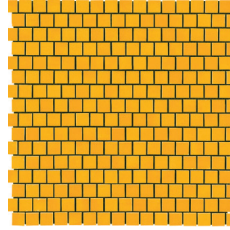
## 0.75"X0.75" MOSAIC



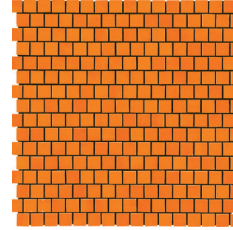
White



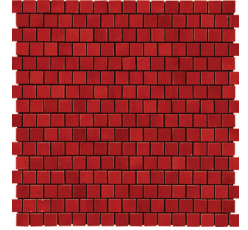
Beige



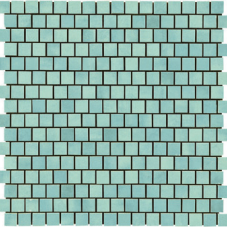
Yellow



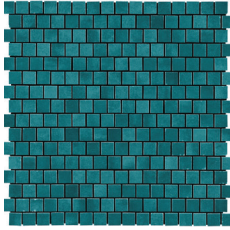
Orange



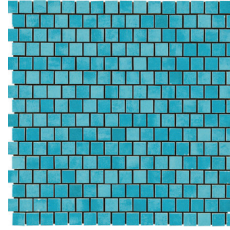
Red



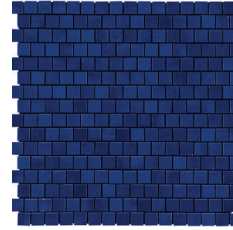
Aquamarine



Teal



Light Blue

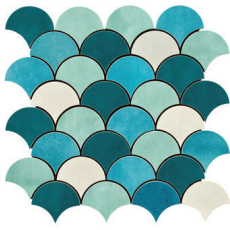


Dark Blue

## 12"X12" SHEET FAN MOSAIC



Mix 1



Mix 2

## 8"X24" WALL DECO



Flower Sea Deco



Flower Sun Deco



Patch Sea Deco



Patch Sun Deco



Stripes Sea Deco



Stripes Sun Deco

Features	Test Method	Value	
<b>Dimensions and Appearance</b>	ISO 10545-2	Prospect L1	
<b>Water Absorption</b>	ISO 10545-3	> 10%	
<b>Flexural Resistance</b>	ISO 10545-4	17 N/mm <sup>2</sup>	
<b>Modules of Rupture</b>		< 7.5 mm	≥ 7.5 mm
		200 N	600 N
<b>Coefficient of Linear Thermal Expansion</b>	ISO 10545-8	≤ 7x10 <sup>-6</sup> °C <sup>-1</sup>	
<b>Resistance to Sudden Temperature Changes</b>	ISO 10545-9	Resistant	
<b>Crazing Resistance</b>	ISO 10545-11	Resistant	
<b>Resistance to Household Chemicals and Swimming Pool Cleansers</b>	ISO 10545-13	min. GB	
<b>Stain Resistance</b>	ISO 10545-14	min. 3	

According to ANSI and MIA standards, depending on the type and size of tile, it is recommended to have at least a 1/8" wide grout joint for floor tiles in order to be able to fill the grout joint full and never less than 1/16" wide. Please refer to TCNA guidelines for more on grout recommendations.

**Product Info:**

- Ceramic Tile
- Glossy Finish
- 9.8mm Thickness
- V2 - Slight Shading Variation
- Frost Resistance = No





[www.genrose.com](http://www.genrose.com)