

JEANS

 **GENROSE**





5.5"x5.5" Field Tile in Washed Blue
5.5"x5.5" Diamond Field Tile in Indigo



5.5"x5.5" Deco in Indigo
5.5"x5.5" Field Tile in Indigo
5.5"x5.5" Diamond Field Tile in White



5.5"x5.5" Field Tile in White
5.5"x5.5" Diamond Field Tile in Grey



5.5"x5.5" Field Tile in White



5.5"x5.5" Field Tile in White
5.5"x5.5" Deco in White



5.5"x5.5" Field Tile in White
5.5"x5.5" Deco in White

AVAILABLE IN:

Field Tile

- 5.5"x5.5" *Matte Finish*
- 5.5"x5.5" *Deco Matte Finish*
- 5.5"x9.5" *Diamond Matte Finish*

Trim Pieces

- 5.5" *Quartino Matte Finish*



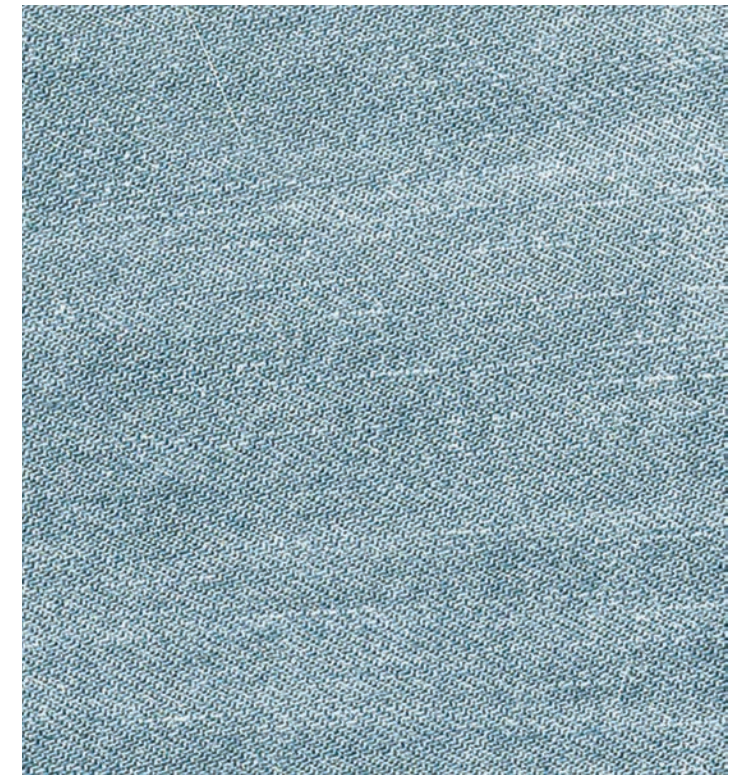
- All sizes are nominal



5.5" Quartino in Washed Blue
5.5"x5.5" Field Tile in Washed Blue
5.5"x5.5" Deco in Washed Blue



White



Washed Blue



Grey



Indigo

Colors shown may vary from actual product. Final selection should be made from actual product samples.

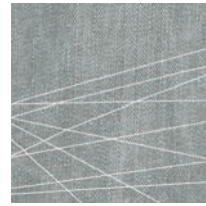
5.5"X5.5" DECO



White



Washed Blue



Grey

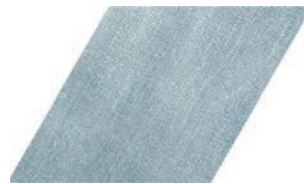


Indigo

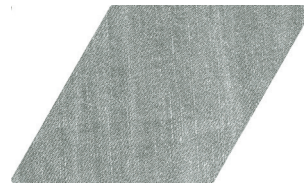
5.5"X5.5" DIAMOND FIELD TILE



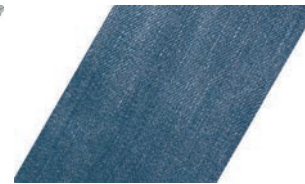
White



Washed Blue



Grey



Indigo



5.5"x5.5" Field Tile in Washed Blue
5.5"x5.5" Diamond Field Tile in Washed Blue

Features	Test Method	Value
Dimensional Features	ISO 10545-2	138 mm +/- 0,6 % x 138 mm +/- 0,6 % 138 mm +/- 0,6 % x 239,5 mm +/- 0,6 %
Water Absorption	ISO 10545-3	$E_b \leq 0,5\%$
Modulus Of Rupture And Breaking Strength	ISO 10545-4	Minimum 35 N/mm ² Individual Minimum 32 N/mm ²
Abrasive Resistance	ISO 10545-7	PEI 3: Grey, Indigo & Washed Blue PEI 4: White
Crazing Resistance	ISO 10545-11	Resistant
Frost Resistance	ISO 10545-11	Resistant
Household Products Resistance	ISO 10545-13	GA
Chemical Resistance	ISO 10545-13	GHA
Stain Resistance	ISO 10545-14	>3
Non-Slip Value	DIN 51130:2014 ANSI A137.1	R10 / CLASS 2 DCOF >0,42

According to ANSI and MIA standards, depending on the type and size of tile, it is recommended to have at least a 1/8" wide grout joint for floor tiles in order to be able to fill the grout joint full and never less than 1/16" wide. Please refer to TCNA guidelines for more on grout recommendations.

Product Info:

- Glazed Porcelain Tile
- Matte Finish
- 8.5mm Thickness
- Pressed Edge
- PEI Rating = 3 (Other Colors) | 4 (White)
- V2 - Slight Shading Variation
- Frost Resistance = Yes





www.genrose.com