

MYSTIQUE

 GENROSE





8"x8" Deco in Vin16  
8"x8" Field Tile in Verde | Bianco



8"x8" Deco in Vin1  
8"x8" Field Tile in Nero

# AVAILABLE IN:

## Field Tile

- 8"x8" *Matte Finish*
- 8"x8" *Deco Matte Finish*

- All sizes are nominal



**Bianco**



**Avio**



**Grigio**



**Verde**

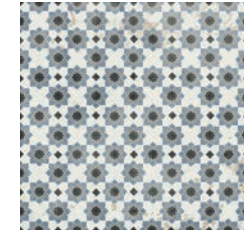


**Nero**

Colors shown may vary from actual product. Final selection should be made from actual product samples.

8"x8" Deco in Vin5  
8"x8" Field Tile in Avio | Bianco

# 8"X8" DECO



Vin1



Vin5



Vin7



Vin16



8"x8" Deco in Vin7  
8"x8" Field Tile in Nero | Bianco

Features	Test Method	Value	
Water Absorption	ISO 10545-3	≤ 0.5%	
Bending Strength	ISO 10545-4	≥ 35 N/mm <sup>2</sup>	
Breaking Strength	ISO 10545-4	Thickness ≤ 7,5 mm	≥ 700 N
	ASTM C 648	Thickness ≥ 7,5 mm	≥ 1300 N
Resistance to Abrasion	ISO 10545-7	Average ≥ 250 lbf	
		Individual ≥ 225 lbf	
Chemical Agent Resistance	ASTM C 650	Class A	
Resistance of Chemical Attack	ISO 10545-13	Domestic Chemicals	Low Concentration
		GA	GLA
Stain Resistance	ISO 10545-14	≥ Class 3	
	ASTM C 1378	Class A	
Slip Resistance	ANSI A137.1-2012 DCOF	> 0.42	

According to ANSI and MIA standards, depending on the type and size of tile, it is recommended to have at least a 1/8" wide grout joint for floor tiles in order to be able to fill the grout joint full and never less than 1/16" wide. Please refer to TCNA guidelines for more on grout recommendations.

**Product Info:**

- Glazed Porcelain Tile
- Matte Finish
- 9.5mm Thickness
- Pressed Edge
- PEI Rating = 3 (Nero) | 4 (All Other Colors)
- V3 - Moderate Variation
- Frost Resistance = Yes





[www.genrose.com](http://www.genrose.com)