

For more product information, scan the QR code.





2" x 18" Field Tile in Aquamarine



2" x 18" Field Tile in Blue



2" x 18" Field Tile in Sky



2" x 18" Field Tile in White and Beige



2" x 18" Field Tile in Ivory

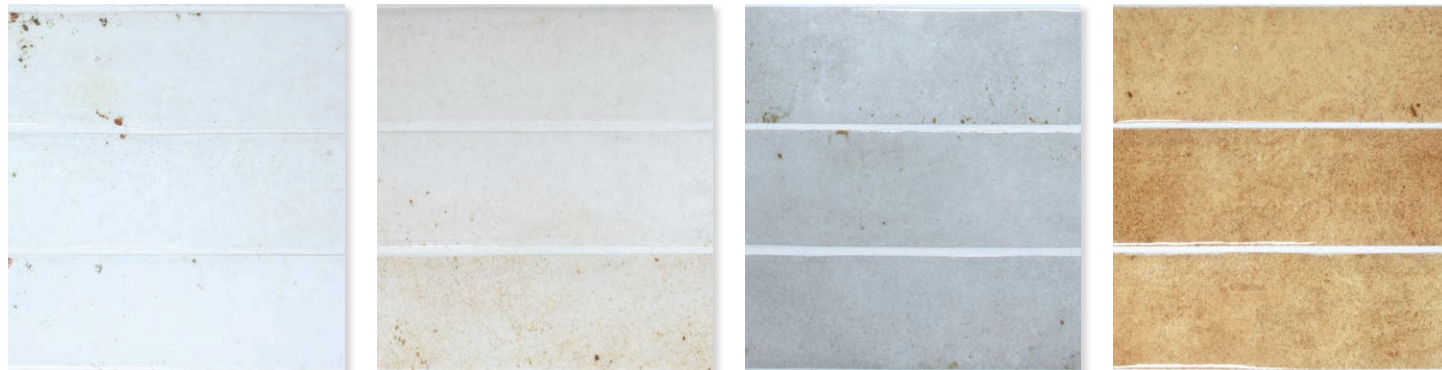


2" x 18" Field Tile in Light Grey

AVAILABLE STOCKED ITEMS:

9.5mm Field Tiles			
SIZE	FINISH	COLORS	
2" x 18"	Polished	White Ivory Light Grey Beige Acquamarine Sky Blue	
	Matte	White Ivory Light Grey Beige Sky Blue	
Trim Pieces			
SIZE	TYPE	FINISH	COLORS
0.2" x 18"	Quartino	Polished	White Ivory Light Grey Beige Acquamarine Sky Blue
	Quartino	Matte	White Ivory Light Grey Beige Sky Blue

All Sizes are Nominal.

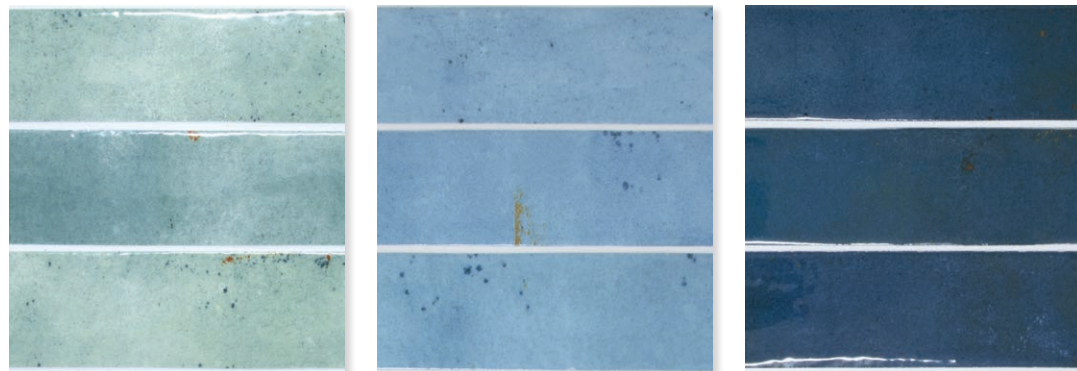


White

Ivory

Light Grey

Beige



Acquamarine

Sky

Blue




Colors shown may vary from actual product. Final selection should be made from actual product samples. Products and availability are subject to change, please refer to our website for the most up to date selection.

V2



ZANZIBAR
Glazed Porcelain Tile

Features	Test Method	Value
Length and Width	ISO 10545 - 2	± 0.3% ± 1.0mm
Thickness		± 5% ± 0.5mm
Straightness of Sides		± 0.3% ± 0.8mm
Rectangularity		± 0.3% ± 1.5mm
Flatness		± 0.4% ± 1.8mm
Water Absorption	ISO 10545 - 3	< 0.2%
Modulus of Rupture	ISO 10545 - 4	> 45 N/mm ²
Breaking Strength		≥ 1300N
Resistance to Surface Abrasion (PEI)	ISO 10545 - 7	Class 3: Blue Class 4: Beige Acquamarine Sky Class 5: White Light Grey Ivory
Coefficient of Linear Thermal Expansion	ISO 10545 - 8	$a \leq 7 \times 10^{-6} C^{-1}$
Thermal Shock Resistance	ISO 10545 - 9	Resistant
Frost Resistance	ISO 10545 - 12	Resistant
Chemical Resistance (Domestic) Chemical Resistance (Low Concentration) Chemical Resistance (High Concentration)	ISO 10545 - 13	A HA LA
Stain Resistance	ISO 10545 - 14	Class 5
Mohs Hardness	UNI EN 101	5
Reaction to Fire	UNI EN 13501	A1 _{FL}
Slip Resistance	EN 16165 and C	Dry > 36 Wet 25 < x < 35
	ANSI A326.3	Polished: DCOF: < 0.42 Does Not Pass Matte: DCOF: 0.62 Pass
Recycled Content	-	52%

This product will contribute to USGBC registered LEED projects.
It will also contribute to the ANSI approved NAHB Green Building Standard ICC 700.
Low Emissions Material • Zero VOC

According to ANSI and MIA standards, depending on the type and size of tile, it is recommended to have at least a 1/8" wide grout joint for floor tile in order to be able to fill the grout joint full and never less than 1/16" wide. Please refer to TCNA guidelines for more on grout recommendations.

Disclaimer: DCOF wet and dry is different on every production lot and can vary. This number represents the average DCOF of the tested production lots. If the spec listed is over the minimum standard, it will meet the requirement.

Product Info:

- Glazed Porcelain Tile
- Polished | Matte Finishes
- 9.5mm Thickness
- Pressed Edge
- PEI = 3 - Blue
- 4 - Beige | Acquamarine | Sky
- 5 - White | Light Grey | Ivory
- V2 - Slight Shading Variation
- Frost Resistance = Yes



www.genrose.com

Contact your sales representative for more information. All material must be inspected prior to installation. Absolutely no claims will be accepted after installation.



www.genrose.com